

图1 气缸、曲轴连杆机构
FIG.1 CYLINDER、CRANKSHAFT COMP.

图1 气缸、曲轴连杆机构
FIG.1 CYLINDER、CRANKSHAFT COMP.



总序号 TOTAL NO.	序号 PEF NO.	代号PART NO.	中文名称 CHINESE NAME	英文名称ENGLISH NAME	数量 Q'TY
IPE40QMB-001	1	IPE40QMB.03-06	离合器隔套	BUSH,CLUTCH	1
IPE40QMB-002	2	IPE40QMB.01.01.03	曲轴左油封	OIL SEAL ASSY.,CRANKSHAFT.L.	1
IPE40QMB-003	3	GB/T 276-94	曲轴轴承6204	BEARING,CRANKSHAF,6204	2
IPE40QMB-004	4	IPE40QMB.03.01	曲轴连杆组合	CRANKSHAFT ROD,CONNECTING COMP	1
IPE40QMB-005	5	IPE40QMB.03.01-02	曲柄销	PIN,CRANKSHAFT	1
IPE40QMB-006	6	IPE40QMB.03-06	半圆键3×13	KEY, 3×13	1
IPE40QMB-007	7		曲轴右油封	OIL SEAL ASSY,CRANKSHAFT.R	1
IPE40QMB-008	8	GB/T 894.1	轴用弹性挡圈19	CIRCLIP,SHAFT,19	2
IPE40QMB-009	9	IPE40QMB.03-05	油泵传动蜗杆	GEAR,OIL PUMP	1
IPE40QMB-010	10	IPE40QMB.03.03	连杆小头滚针轴承	BEARING,ROLLER PIN,ROD	1
IPE40QMB-011	11	IPE40QMB.04-02	活塞销挡圈	CIRCLIP,PISTON-PIN	2
IPE40QMB-012	12	IPE40QMB.03-03	活塞销	PIN, PISTON	1
IPE40QMB-013	13	IPE40QMB.04.01	活塞	PISTON COMP.	1
IPE40QMB-014	14	IPE40QMB.04-01	第二道活塞环	THE SECOND RING,PISTON	1
IPE40QMB-015	15	IPE40QMB.04-01	第一道活塞环	THE FIRST RING,PISTON	1
IPE40QMB-016	16	IPE40QMB.02-02	气缸体垫	GASKET,CYLINDER	1
IPE40QMB-017	17	IPE40QMB.02-01	气缸体	CYLINDER	1
IPE40QMB-018	18	IPE40QMB.02-03	气缸盖垫	GASKET, CYLINDER COVER	1
IPE40QMB-019	19	IPE40QMB.02-04	气缸盖	COVER, CYLINDER	1
IPE40QMB-020	20	IPE40QMB.02-05	气缸盖螺母	NUT, COVER,CYLINDER	4
IPE40QMB-021	21	IPE40QMB.02.01	火花塞	PLUG,SPARK	1

图2 左盖, 机体部分
FIG.2-1 L. COVER, CRANKCASE COMP.

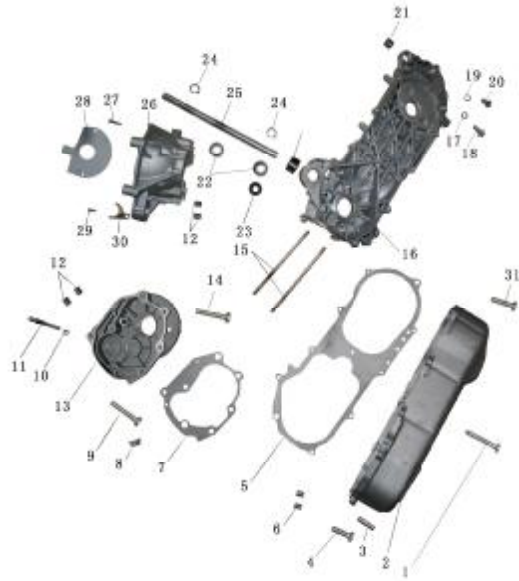


图2 左盖, 机体部分
FIG.2-1 L. COVER, CRANKCASE COMP.

总序号TOTAL NO.	序号PEF NO.	代号PART NO.	中文名称CHINESE NAME	英文名称ENGLISH NAME	数量QTY
IPE40QMB-022	1	GB/T 823	螺钉M6×65	SCREW, 6×65	1
IPE40QMB-023	2	IPE40QMB.01.03-01	左盖	COVER,L	1
IPE40QMB-024	3	IPE40QMB.01.03-02	脚启动棘轮轴	SHAFT, KICK STARTER	1
IPE40QMB-025	4	GB/T 823	螺钉M6×35	SCREW, 6×35	1
IPE40QMB-026	5	IPE40QMB.01.03-04	左盖密封垫	WASHER, COVER, L.	1
IPE40QMB-027	6	IPE40QMB.01.03-03	定位套Φ12×14	PIN,DOWEL, Φ12×14	2
IPE40QMB-028	7	IPE40QMB.01.02-04	盖板密封垫δ0.5	GASKET,COVER BOARD, δ0.5	1
IPE40QMB-029	8	GB/T 6177.1	六角法兰面螺母M8	BOLT,FLANGE, M8	1
IPE40QMB-030	9	GB/T 16674	螺钉M8×50	SCREW, 8×50	5
IPE40QMB-031	10	IPE40QMB.01.02-02	制动蹄安装轴O形圈	SETTER SHAFT, BRAKE, O-RING	1
IPE40QMB-032	11	IPE40QMB.01.02-03	制动蹄安装轴	SETTER SHAFT, BRAKE	1
IPE40QMB-033	12	IPE40QMB.01.01-03	定位销Φ12×16	PIN,DOWEL, Φ12×16	4
IPE40QMB-034	13	IPE40QMB.01.02-01	减速箱体	CAP.REDUCTION CASE	1
IPE40QMB-035	14	GB/T 16674	螺钉M8×55	SCREW, 8×50	2
IPE40QMB-036	15	IPE40QMB.01.01-08	双头螺栓M7×110	BOLT,STUD, 7×110	4
IPE40QMB-037	16	IPE40QMB.01.01-01	左箱体	CRANKCASE,L.	1
IPE40QMB-038	17	IPE40QMB.01.01-05	密封垫8	GASKET,8	1
IPE40QMB-039	18	GB/T 16674	六角法兰面螺栓M8×16	BOLT,FLANGE, 8×16	1
IPE40QMB-040	19	IPE40QMB.01.01-06	加油口螺塞O形圈	PLUG,OIL O-RING	1
IPE40QMB-041	20	IPE40QMB.01.01-07	加油口螺塞	PLUG,OIL	1
IPE40QMB-042	21	IPE40QMB.01.01.01	后减震套组合	REAR SHOCK ABSORPTION SET COMP	1
IPE40QMB-043	22	GB/T 276-94	深沟球轴承6003-2RS	BEARING,6003-2RS	2
IPE40QMB-044	23	IPE40QMB.01.02.01	输入轴油封组合	OIL SEAL ASSY., IN. SHAFT	1
IPE40QMB-045	24	GB/T 894.1	轴用弹性挡圈,17	CIRCLIP,SHAFT,17	2
IPE40QMB-046	25	IPE40QMB.01.01-09	发动机前安装轴	SETTER SHAFT, ENGINE	1
IPE40QMB-047	26	IPE40QMB.01.01-02	右箱体	CRANKCASE COMP, R.	1
IPE40QMB-048	27	GB/T 823	螺钉M6×35	SCREW, 6×35	1
IPE40QMB-049	28	IPE40QMB.01.01-11	磁电机底板密封垫	GASKET, MAGNETO BOTTOM BOARD	1
IPE40QMB-050	29	GB/T 823	螺钉M6×12	SCREW, 6×12	1
IPE40QMB-051	30	IPE40QMB.01.01-10	曲轴右油封挡片	RETAINER,R. OIL SEAL	1
IPE40QMB-052	31	GB/T 823	螺钉M6×25	SCREW, 6×25	8

图3机油泵、风冷系统
FIG.3 OIL PUMP、AIR COOLING SYSTEM



图3机油泵、风冷系统
FIG.3 OIL PUMP、AIR COOLING SYSTEM

总序号TOTAL NO.	序号PEF NO.	代号PART NO.	中文名称CHINESE NAME	英文名称ENGLISH NAME	数量 QTY
IPE40QMB-053	1	IPE40QMB.08	机油泵总成	OIL PUMP ASSY	1
IPE40QMB-054	2	IPE40QMB.15-06	导风罩卡块	SHROUD BLOCK	2
IPE40QMB-055	3	IPE40QMB.15-05	导风罩	SHROUD	1
IPE40QMB-056	4	IPE40QMB.15-04	进风罩减震条	SHOCK ABSORPTION BAR ,IN. WIND	3
IPE40QMB-057	5	GB/T 845	自攻螺钉ST6.3×40FH	SCREW, TAPPING ST6.3×40FH	1
IPE40QMB-058	6	GB/T 823	螺钉M6×20	M6×20 SREW	2
IPE40QMB-059	7	GB/T 848	小垫圈-A级(6-140HV)	SMALL WASHER A STYLE (6-140HV)	2
IPE40QMB-060	8	IPE40QMB.15-02	进风罩减震套	SHOCK ABSORPTION SET ,IN. WIND	2
IPE40QMB-061	9	IPE40QMB.15-03	进风罩	COVER,IN. WIND	1
IPE40QMB-062	10	GB/T 823	螺钉M6×14	SCREW,M6×14	3
IPE40QMB-063	11	GB/T 859	轻型弹簧垫圈6	SPRING WASHER 6	3
IPE40QMB-064	12	GB/T 848	小垫圈-A级(6-140HV)	SMALL WASHER A STYLE (6-140HV)	2
IPE40QMB-065	13	IPE40QMB.15.01	冷却风扇组合	FAN COMP.COOLING	1
IPE40QMB-066	14	IPE40QMB.15-07	风扇O形圈	O-RING,FAN	1

图4 簧片阀、化油器
FIG.4 REED VALVE、CARBURETOR COMP.



图4 簧片阀、化油器
FIG.4 REED VALVE、CARBURETOR COMP.

总序号 TOTAL NO.	序号 PEF NO.	代号 PART NO.	中文名称 CHINESE NAME	英文名称 ENGLISH NAME	数量 QTY
IPE40QMB-067	1	IPE40QMB.05.01	簧片阀体	REED VALVE	1
IPE40QMB-068	2	IPE40QMB.05.01-05	簧片阀垫	WASHER, REED VALVE	1
IPE40QMB-069	3	IPE40QMB.05	簧片阀进气管组合	REED VALVE, IN. PIPE COMP.	2
IPE40QMB-070	4	GB/T 70.1	螺钉M6×20	SCREW, 6×20	4
IPE40QMB-071	5	IPE40QMB.05.03	进气管卡箍	CIRCLIP COMP. ,INLET. PIPE	1
IPE40QMB-072	6	IPE40QMB.06	化油器总成	CARBURETOR ASSY	1
IPE40QMB-073	7	IPE40QMB.05-01	进气管安装套	SETTING COVER INLET. PIPE	1

图5 磁电机
FIG.5 MAGNETO



图5 磁电机
FIG.5 MAGNETO

总序号TOTAL NO.	序号PEF NO.	代号PART NO.	中文名称CHINESE NAME	英文名称ENGLISH NAME	数量 QTY
IPE40QMB-073	1	GB/T 6171.2	I型六角螺母M10×1.25	NUT, HEX,10×1.25	1
IPE40QMB-074	2	GB/T 848	小垫圈-A级	SMALL WASHER	1
IPE40QMB-075	3	IPE40QMB.11.02	磁电机飞轮组合	FLY WHEEL COMP.,MAGNETO	1
IPE40QMB-076	4	IPE40QMB.11	定子组件	MAGNETO ASSY.	1

图6 起动装置
FIG.6 STARTER COMP



总序号TOTAL NO.	序号 PEF NO.	代号PART NO.	中文名称CHINESE NAME	英文名称ENGLISH NAME	数量 Q'TY
IPE40QMB-077	1	IPE40QMB.12.01	脚踏动踏杆组合	LEVER ASSY., KICK STARTER	1
IPE40QMB-078	2	GB/T 5780	六角螺栓M6×25	BOLT, 6×25	1
IPE40QMB-079	3	GB/T 894.1	轴用弹性挡圈15	CIRCLIP, SHAFT, 15	1
IPE40QMB-080	4	IPE40QMB.12-01	踏杆轴垫圈	WASHER, SHAFT	1
IPE40QMB-081	5	IPE40QMB.12-02	踏杆轴套	BUSH, LEVER	1
IPE40QMB-082	6	IPE40QMB.12-03	踏杆回位弹簧	SPRING, LEVER	1
IPE40QMB-083	7	IPE40QMB.12.02	扇形齿轮焊接组合	GEAR ASSY., FAN SHAPE	1
IPE40QMB-084	8	IPE40QMB.12.03	脚踏动小齿轮组合	SMALL GEAR ASSY., KICK STARTER	1
IPE40QMB-085	9	IPE40QMB.12-04	脚踏动止转簧	SPRING, KICK STARTER	1
IPE40QMB-086	10	IPE40QMB.13.03.02	内环大齿轮组合	BIG GEAR, CLUTCH	1
IPE40QMB-087	11	IPE40QMB.13.03	超越离合器组合	CLUTCH COMP.	1
IPE40QMB-088	12	IPE40QMB.13.03.03	滚针轴承	BEARING, ROLLER NEEDLE	1
IPE40QMB-089	13	IPE40QMB.13-03	起动大齿轮定位套盘	DOWEL PLATE, GEAR, STARTER	1
IPE40QMB-090	14	GB/T 823	螺钉M6×12	SCREW, 6×12	2
IPE40QMB-091	15	IPE40QMB.13-01	中间齿轮挡板	BLOCKING BOARD, COUNTSHAFT	1
IPE40QMB-092	16	IPE40QMB.01.01-04	电起动中间齿轮轴	SHAFT, MIDDLE GEAR, STARTER	1
IPE40QMB-093	17	IPE40QMB.13-02	中间齿轮垫片	BLOCKING BOARD, COUNT SHAFT	1
IPE40QMB-094	18	IPE40QMB.13.02	电起动中间齿轮组合	COUNTSHAFT COMP., ELECTRICAL STARTER BEARING, ROLLER NEEDLE	1
IPE40QMB-095	19	GB/T 290	滚针轴承HK 081210	HK 081210 BEARING, ROLLER NEEDLE	1
IPE40QMB-096	20	GB/T 70.1	内六角圆柱头螺钉M6×20	SCREW, 6×20	2
IPE40QMB-097	21	IPE40QMB.13.01	起动电机部件	MOTOR ASSY., STARTER	1

图6 起动装置
FIG.6 STARTER COMP

图7 自动离心式变速机构
FIG.7 AUTO. REDUCTION SYSTEM



图7 自动离心式变速机构
FIG.7 AUTO. REDUCTION SYSTEM

总序号TOTAL NO.	序号PEF NO.	代号PART NO.	中文名称CHINESE NAME	英文名称ENGLISH NAME	数量Q'TY
IPE40QMB-098	1	GB/T 276-94	输入轴左轴承	BEARING, L. SHAFT, DRIVE	1
IPE40QMB-099	2	GB/T 6171.2	螺母M10×1	NUT, 10×1	1
IPE40QMB-100	3	IPE40QMB.10	从动轮组合	MOVABLE DRIVEN COMP	1
IPE40QMB-101	4	IPE40QMB.09.02-03	V形带	BELT, "V" SHAPE	1
IPE40QMB-102	5	IPE40QMB.09	主动轮组合	MAIN WHEEL, DRIVE COMP	1
IPE40QMB-103	6	IPE40QMB.09-01	主动轮星形板	BOARD,WHEEL, DRIVE	1
IPE40QMB-104	7	IPE40QMB.03-02	脚起动齿套	SPACER,KICK STARTER	1
IPE40QMB-105	8	IPE40QMB.03-01	碟形垫圈	WASHER	1
IPE40QMB-106	9	GB/T 6171.2	I型六角螺母M10×1.25	NUT, HEX,10×1.25	1

图8 后传动
(REAR TRANSMISSION)



图8 后传动
(REAR TRANSMISSION)

总序号TOTAL NO.	序号PEF NO.	代号PART NO.	中文名称CHINESE NAME	英文名称ENGLISH NAME	数量Q'TY
IPE40QMB-107	1	IPE40QMB.14-01	输入轴	SHAFT, DRIVE	1
IPE40QMB-108	2	GB/T 276	轴承6203	BEARING,6203	1
IPE40QMB-109	3	GB/T 894.1	轴用弹性挡圈	CIRCLIP, SHAFT	1
IPE40QMB-110	4	IPE40QMB.14-03	大垫圈C-级	BIG WASHER, C-LEVEL	1
IPE40QMB-111	5	GB/T 823	螺钉M6×10	SCREW	1
IPE40QMB-112	6	IPE40QMB.14-02	垫圈	WASHER	1
IPE40QMB-113	7	IPE40QMB.14-02	碟形垫片	WASHER	1
IPE40QMB-114	8	IPE40QMB.14.01	中间齿轮组合	COUNTERSHAFT COMP.	1
IPE40QMB-115	9	GB/T 276	轴承6200	BEARING,6200	1
IPE40QMB-116	10	GB/T 276	轴承6202	BEARING,6202	1
IPE40QMB-117	11	IPE40QMB.14.02	输出轴组合	SHAFT COMP.,DRIVEN SHAFT	1
IPE40QMB-118	12	IPE40QMB.01.02.01	输出轴油封	OILSEAL,DRIVEN SHAFT	1
IPE40QMB-119	13	GB/T 276	轴承6204-2RS	BEARING, 6204-2RS	1
IPE40QMB-120	14	GB/T 893.1	孔用弹性挡圈A-型	CIRCLIP,HOLE A STYLE	1

图9 后制动机构部件
FIG9 (REAR BRAKE PARTS)



图9 后制动机构部件
FIG9 (REAR BRAKE PARTS)

总序号TOTAL NO.	序号PEF NO.	代号PART NO.	中文名称CHINESE NAME	英文名称ENGLISH NAME	数量Q'TY
IPE40QMB-121	1	IPE40QMB.17-01	后制动凸轮轴	CAMSHAFT, REAR BRAKE	1
IPE40QMB-122	2	IPE40QMB.17.01	后制动踏板组合	REAR BRAKE STEP COMP	1
IPE40QMB-123	3	IPE40QMB.17-04	后制动摇臂	ROCKER REAR BRAKE	1
IPE40QMB-124	4	GB/T 16674	螺栓M6×30	M6×30 BOLT	1